



Disney CRUISE LINE

Mar 12, 2024

Disney Lookout Cay at Lighthouse Point Updates: Disney Cruise Line's Newest Tropical Destination

Hello, travelers! Follow along for exclusive updates as we await the grand opening of Disney Lookout Cay at Lighthouse Point, Disney Cruise Line's newest, one-of-a-kind tropical retreat on the island of Eleuthera, The Bahamas.



Disney Cruise Line's newest island destination, Disney Lookout Cay at Lighthouse Point on the island of Eleuthera, opens this summer. This beautiful destination will offer a window into the rich culture, warm hospitality and breathtaking natural beauty of The Bahamas.

Today, we're excited to share some first-look photos of construction progress, which give a glimpse of the inspiration and stunning architecture of Disney Lookout Cay at Lighthouse Point.



Cabanas

The vibrant colors and patterns designed by a Bahamian artist dotting the beautiful shores of Disney Lookout Cay? Those are the Mabrika Cove Cabanas, which will be available for families to relax and play along the white sand and turquoise Bahamian waters.

Among the first sights guests will see when approaching Disney Lookout Cay, the colorful cabanas will set a tone for the vibrant and beautiful architecture throughout the island destination.



True-True Too BBQ

Walt Disney Imagineering designed the architecture throughout Disney Lookout Cay at Lighthouse Point to resemble a series of colorful, oversized seashells scattered along the coastline. From these beautiful decks under the shade of a shell-inspired pavilion, guests will enjoy some tasty lunch from True-True Too BBQ while taking in the beautiful views of the ocean and sand dunes.

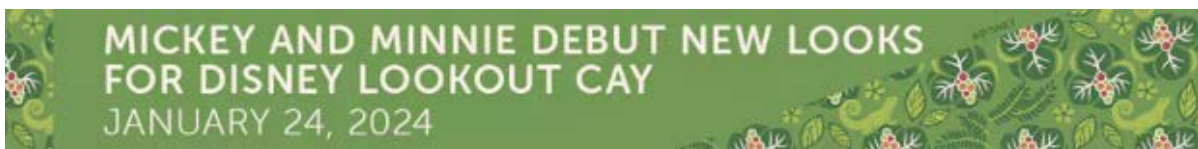
Can you spot some nature-inspired art under the pavilion? That is just a peek of the art that will fill these beautiful spaces, all drawn from the coral, seashells, fish, and flowers that inform the architecture and also inspire Eleuthera's local artists.



Tram Stop

Another early sight of Disney Lookout Cay at Lighthouse Point is one of our tram stops. This space will soon be filled with the bright colors that will light up the destination, inspired by the warmth of Bahamian art and culture. Expect hair braiding, merchandise, and lots of fun.

Stay tuned for more exciting updates as we count down the days to June!



Mickey and Minnie Mouse will have new looks specially designed by acclaimed Bahamian fashion designer Theodore Elyett whenever they visit Disney Cruise Line's newest island destination, Disney Lookout Cay at Lighthouse Point on the island of Eleuthera. The garments will have a distinct Bahamian flair, inspired by the bright, colorful spirit of Junkanoo, the country's signature festival filled with joyous music and vibrant parades.



We have new details on some of the exciting places guests'll find at Disney Lookout Cay at Lighthouse Point when it debuts in summer

2024! As soon as guests step foot on this breathtaking island destination, they will discover a celebration of Bahamian storytelling, artistry and culture.

© Disney